



# SAFES



[www.burg.biz/uk](http://www.burg.biz/uk)



BURG-WÄCHTER are Europe's largest safe manufacturer with strong corporate values.

Quality craftsmanship and a 100 year heritage of lock making are central to BURG-WÄCHTER values.

Today, every lock across the safe range are manufactured to exacting design specifications.

BURG-WÄCHTER are members of the European Security Systems Association (ESSA) and VDMA security systems.

All BURG-WÄCHTER certified Eurograde safes are tested to the European burglar resistance standard known as EN 1143 these standards are recognised by the Association of Insurance Surveyors (AiS) and ensure BURG-WÄCHTER safes meet strict UK insurance requirements.

BURG-WÄCHTER manufacture and supply high quality products and are a brand trusted throughout the world.



# Safe Range



## Contents

The BURG-WÄCHTER difference	1
Choosing the right safe	2

## Safe models

PointSafe	3 - 6
HomeSafe	7 - 8
CityLine	9 - 10
Combi-Line	11 - 14
Karat	15 - 18
Diplomat	19 - 22
Royal	23 - 26
Gun Cabinets	27 - 30
Commercial Safety Cabinets	31 - 32



# The difference

## German engineering

A safe should be the most secure place in your home or office and this is why BURG-WÄCHTER believe in quality German craftsmanship and precision engineering to offer safes that provide peace of mind by protecting your most valuable assets.

## Personalised safes

We are proud to offer a range of safes that can be customised to personal taste. On selected models, including the luxury Royal safe, elements such as the paint finish, bolt work, locking options and internal fittings can be manufactured to your requirements.

## Buy with confidence

BURG-WÄCHTER safes are engineered in Germany to offer superior quality and reliability. We are proud to be affiliated to leading UK and European industry bodies.





# Choosing the right safe



Selecting a safe may seem like a daunting experience with a whole host of models, features and certifications to consider. To assist selection, safes are classified in terms of cash ratings – as a general rule of thumb, the higher the cash rating, the greater the security.

## Choosing a safe in four easy steps

### Cash Rating

Decide what cash rating you require. Will the cash rating exceed the value of the goods/money stored inside the safe? Remember, for valuables and jewellery, you are normally covered for up to ten times the cash value – however, it is always worth checking this with your insurer.

### Fire Protection

Often, items stored inside safes are irreplaceable. Fire safes offer extra protection to the contents stored inside, in the event of a fire. Certified fire protection should be a consideration. Some manufacturers may claim fire protection, but their claims are not tested to European standards. Always check your safe is certified to EN15695 if you want real protection.

### Locking Options

Safes often feature multiple locking options and the three most common are; Key, Electronic Combination and Fingerscan. Key locks offer the simplest form of access, however it is important to keep the key in a secure location. Combination locks do not require a key and work with a user combination code to access the safe. The latest development is fingerscan technology that allows safes to be operated by reading the unique pattern of a finger print. Burg are the only safe manufacturer to offer a certified fingerscan.

### Size and Weight

It is quite easy to forget the simplest consideration when selecting a safe – do I have space for it? Consider where you wish to place the safe in the home or office, and make sure you have space to accommodate it. It is also important to consider what you wish to store inside the safe and choose one that can accommodate these items. Finally remember to pay attention to the weight of the safe – safes can weigh well over a tonne! Is the property accessible for installation and will the floor withstand the weight of the safe?



# PointSafe

## Insurance rating

- £1,000 cash rating
- £10,000 valuables

The PointSafe models combine a good level of security and performance with great value. The comprehensive range includes freestanding and wall safes available in a choice of locking options suitable for both home and hotel use.

- Strong 7mm thick door plate for enhanced drill protection
- Large 22mm locking bolts are protected with reinforced steel plates
- Available in a wide choice of sizes and locking options for both freestanding and wall installation
- Motorised bolts for electronic and fingerscan models



P 4 E F5

# PointSafe

key operated



## Insurance rating

- £1,000 cash rating
- £10,000 valuables



## Version S (key operated)

German manufactured six lever lock with 100,000 key differs.

Art.-No.	Exterior H x W x D	Interior H x W x D	Door H x W	Weight	Volume
	mm	mm	Opening mm	kg	l
P 1 S	180 x 280 x 200	173 x 273 x 141	135 x 188	7.5	6.7
P 2 S	255 x 350 x 300	248 x 343 x 241	188 x 230	14.0	20.5
P 3 S	320 x 442 x 350	310 x 435 x 288	240 x 317	20.0	38.8

## Wall Safes

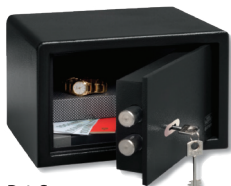
PW 1 S	180 x 260 x 148	150 x 230 x 100	6.8	3.5
PW 2 S	220 x 340 x 140	177 x 298 x 85	10.2	4.5
PW 3 S	260 x 390 x 195	213 x 345 x 140	15.0	10.3

Ideal for all users, key locks offer the simplest method of safe access. Supplied with two keys as standard.



PW 1 S

Available as a wall safe in 3 size options



P 1 S



P 2 S



P 3 S



# PointSafe

## electronic keypad

### Insurance rating

- £1,000 cash rating
- £10,000 valuables



### Version E (electronic keypad)

Fully programmable lock suitable for both home and hotel use. Emergency key override feature allows access in the event of a forgotten combination code.

Art.-No.	Exterior H x W x D	Interior H x W x D	Door H x W	Weight	Volume
	mm	mm	Opening mm	kg	l
P 1 E	180 x 280 x 200	173 x 273 x 141	135 x 188	7.5	6.7
P 2 E	255 x 350 x 300	248 x 343 x 241	188 x 230	14.0	20.5
P 3 E	320 x 442 x 350	310 x 435 x 288	240 x 317	20.0	38.8
P 3 E Lap	200 x 445 x 380	196 x 441 x 323	140 x 380	15.2	27.9
P 4 E	500 x 416 x 350	490 x 410 x 288	423 x 290	25.5	57.9

### Wall Safes

PW 2 E	220 x 340 x 140	177 x 298 x 85	10.2	4.5
PW 3 E	260 x 390 x 195	213 x 345 x 140	14.8	10.3

Combination locks are a great alternative to key locks, offering quick access with no key to lose or misplace. Combination codes are fully user programmable.



Available as a wall safe in 2 sizes

PW 2 E



P 1 E



P 2 E



P 3 E



P 3 E Lap



P 4 E

# PointSafe

electronic keypad with fingerscan



## Insurance rating

- £1,000 cash rating
- £10,000 valuables



## Version E FS (electronic keypad with fingerscan)

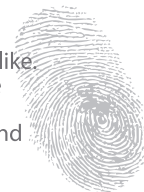
Fully programmable lock with fingerscan module suitable for both home and hotel use. Includes emergency key override feature.

Art.-No.	Exterior H x W x D	Interior H x W x D	Door H x W	Weight	Volume
	mm	mm	Opening mm	kg	l
P 2 E FS	255 x 350 x 300	248 x 343 x 241	188 x 230	14.0	20.5
P 3 E FS	320 x 442 x 350	310 x 435 x 288	240 x 317	20.0	38.8
P 3 E FS Lap	200 x 445 x 380	196 x 441 x 323	140 x 380	15.2	27.9
P 4 E FS	500 x 416 x 350	490 x 410 x 288	423 x 290	25.5	57.9

Fingerscan locks require no key or code. A simple swipe of an authorised fingerprint operates the lock.

## Did you know?

No two fingerprints are alike. Even identical twins have unique prints. Fingerscan offers quick and secure access.



P 2 E FS



P 3 E FS



P 3 E FS Lap



P 4 E FS





# HomeSafe

## Insurance rating

- £2,000 cash rating
- £20,000 valuables

The HomeSafe models feature safes with compact dimensions making them ideal for domestic dwellings where space can be at a premium. Available in three sizes with two locking options and a model with a mail slot allowing quick deposits of cash into the safe without having to open the door.

- Certified security against attack to VDMA 24992 5/1995
- VdS approved locks with a choice of key or electronic combination lock
- H1 and H4 models include a fire protective material to offer basic fire resistance

## NEW Model



H4S



H4E

## Certification



[www.burg.biz/uk](http://www.burg.biz/uk)

# HomeSafe

key operated or electronic keypad



## Insurance rating

- £2,000 cash rating
- £20,000 valuables



## Version S (key operated)

9 lever lock with more than 1,000,000 key differs. VdS tested and ECB.S certified to EN1300 Class A. Supplied with two keys as standard.

Art.-No.	Exterior H x W x D mm	Interior H x W x D mm	Door H x W Opening mm	Weight kg	Volume l
H 1 S	278 x 402 x 376	209 x 336 x 294	209 x 326	30.0	20.6
H 3 S*	257 x 347 x 298	216 x 340 x 243	184 x 276	16.0	17.8
H 3 S C4 EWS*	257 x 347 x 298	216 x 340 x 243	184 x 276	16.0	17.8
H 4 S	528 x 435 x 382	440 x 350 x 292	440 x 345	49.0	45.3



## Version E (electronic keypad)

Fully programmable VdS tested electronic combination lock with ECB.S certification to EN1300 Class B, offering 1,000,000 possible code combinations.

Art.-No.	Exterior H x W x D mm	Interior H x W x D mm	Door H x W Opening mm	Weight kg	Volume l
H 1 E	278 x 402 x 376	209 x 336 x 294	209 x 326	30.0	20.6
H 3 E*	257 x 347 x 298	216 x 340 x 243	184 x 276	16.0	17.8
H 3 E C4 EWS*	257 x 347 x 298	216 x 340 x 243	184 x 276	16.0	17.8
H 4 E	528 x 435 x 382	440 x 350 x 292	440 x 345	49.0	45.3

\* HomeSafe H3 safes feature high security certified locks with a lightweight body and are ideal for home installation. Insurance rated to £1,000 cash and £10,000 valuables.



H 1 S



H 1 E



H 3 S\*



H 3 E\*



H 3 S C4 EWS\*



H 3 E C4 EWS\*



# CityLine

## Insurance rating

- £2,000 cash rating
- £20,000 valuables

The CityLine models offer certified security features, basic fire protection and a choice of locking options, making it ideal for home and office use.

- Certified security against attack to VDMA 24992 5/1995 Level B
- VdS approved and ECB.S certified locks
- Fire protective material in body is certified to DIN 4102-A1 and offers basic fire protection



## Version E FS (electronic keypad with fingerscan)

Fully programmable combination lock with integrated fingerscan. Simply swipe pre-programmed finger to operate the lock.

Art.-No.	Exterior H x W x D	Interior H x W x D	Door H x W	Weight	Volume
	mm	mm	Opening mm	kg	l
C 1 E FS	278 x 402 x 376	209 x 336 x 294	209 x 326	30.0	20.6
C 4 E FS	528 x 435 x 382	440 x 350 x 292	440 x 345	49.0	45.3

## Certification



C 1 E FS

C 4 E FS

[www.burg.biz/uk](http://www.burg.biz/uk)

# CityLine

key operated or electronic keypad



## Insurance rating

- £2,000 cash rating
- £20,000 valuables



### Version S (key operated)

ECB.S certified (EN 1300 class B) armoured high security 10 lever key lock with 50,000,000 key differs. Resettable lock can be reprogrammed\*.

Art.-No.	Exterior H x W x D	Interior H x W x D	Door H x W	Weight	Volume
	mm	mm	Opening mm	kg	l
C 1 S	278 x 402 x 376	209 x 336 x 294	209 x 326	30.0	20.6
C 4 S	528 x 435 x 382	440 x 350 x 292	440 x 345	49.0	45.3

### Wall Safes

C W 5 350 S	326 x 440 x 350	243 x 343 x 294	243 x 335	19.5	24.5
-------------	-----------------	-----------------	-----------	------	------

\* Lock can be reprogrammed to a new set of keys for freestanding models.



### Version E (electronic keypad)

VdS tested electronic combination with ECB.S certification (EN1300 Class B). 1,000,000 possible user key combinations.

Art.-No.	Exterior H x W x D	Interior H x W x D	Door H x W	Weight	Volume
	mm	mm	Opening mm	kg	l
C 1 E	278 x 402 x 376	209 x 336 x 294	209 x 326	30.0	20.6
C 4 E	528 x 435 x 382	440 x 350 x 292	440 x 345	49.0	45.3



C 1 S



C 4 S



C W 5 350 S



C 1 E



C 4 E



# Combi-Line

## Insurance rating

- £4,000 cash rating
- £40,000 valuables

The Combi-Line fire safe models offer the perfect balance of performance and value. With certified fire protection, insurance approved attack resistance and available in three sizes, the Combi-Line delivers dependable security for your valuables.

- Grade S2 to EN 14450 & VDMA security level B (VDMA 24992)
- AiS approved for £4,000 cash rating
- Certified 30 minute fire protection to LFS 30 P according to EN 15659
- Independently attack and fire tested by ECB.S
- Locking bolts on 2 sides of the door
- Prepared for wall or floor fixing



## Certification



## Fire certification



[www.burg.biz/uk](http://www.burg.biz/uk)



# Combi-Line

key operated



## Insurance rating

- £4,000 cash rating
- £40,000 valuables



## Version S (key operated)

ECB.S certified (EN 1300 class A) and VdS tested high security 9 lever lock is ideal for all users with the simplest method of access to the safe.

Art.-No.	Exterior H x W x D	Interior H x W x D	Door H x W	Weight	Volume
	mm	mm	Opening mm	kg	l
CL 10 S	320 x 435 x 380	205 x 320 x 232	205 x 265	44	15
CL 20 S	360 x 495 x 445	245 x 380 x 297	245 x 325	55	27
CL 40 S	560 x 495 x 445	445 x 380 x 297	445 x 325	77	50

Ideal for all users, key locks offer the simplest method of safe access. Supplied with two keys as standard and the lock has over 1,000,000 key differs.



CL 10 S



CL 20 S



CL 40 S



# Combi-Line

electronic keypad

## Insurance rating

- £4,000 cash rating
- £40,000 valuables



## Version E (electronic keypad)

VdS tested electronic combination lock with ECB.S certification (EN 1300 class B). Easily programmable with up to 1,000,000 code combinations possible.

Art.-No.	Exterior H x W x D	Interior H x W x D	Door H x W	Weight	Volume
	mm	mm	Opening mm	kg	l
CL 10 E	320 x 435 x 380	205 x 320 x 232	205 x 265	44	15
CL 20 E	360 x 495 x 445	245 x 380 x 297	245 x 325	55	27
CL 40 E	560 x 495 x 445	445 x 380 x 297	445 x 325	77	50

Electronic combination locks are a great alternative to key locks, offering quick access with no key to lose or misplace. Combination code is fully user programmable.



CL 10 E



CL 20 E



CL 40 E

# Combi-Line

electronic keypad with fingerscan



## Insurance rating

- £4,000 cash rating
- £40,000 valuables



## Version E FS (electronic keypad with fingerscan)

VdS tested and ECB.S certified (EN 1300 class 1) combination lock with biometric fingerscan. 10 fingerprint memory\* and 6 digit user pin code.

Art.-No.	Exterior H x W x D	Interior H x W x D	Door H x W	Weight	Volume
	mm	mm	Opening mm	kg	l
CL 10 E FS	320 x 435 x 380	205 x 320 x 232	205 x 265	44	15
CL 20 E FS	360 x 495 x 445	245 x 380 x 297	245 x 325	55	27
CL 40 E FS	560 x 495 x 445	445 x 380 x 297	445 x 325	77	50

\* 2 different fingers must be programmed to open the safe for additional security



CL 10 E FS



CL 20 E FS



CL 40 E FS

Fully programmable combination lock with integrated fingerscan module. No key or codes required a simple swipe of 2 programmed fingerprints operates the lock.

## Did you know?

Biometric fingerscan technology only works with living fingers to ensure copies cannot be used.





# Karat

## Insurance rating

- £6,000 cash rating
- £60,000 valuables

The Karat safe models are ideal for those requiring enhanced protection with all-round stainless steel construction for extreme resistance against flame cutting, drilling and attack.

- Resistance grade 0 and independently tested by ECB.S to EN 1143-1
- AiS approved for £6,000 cash rating
- Fire resistant materials certified to DIN 4102-A1
- Locking bolts on 3 sides of the door
- Triple walled body
- Enhanced security features
- Prepared for wall and floor fixing
- Adjustable shelf
- Karat electronic models are compatible with TSE door locks and software



## Certification



[www.burg.biz/uk](http://www.burg.biz/uk)

# Karat

key operated or electronic keypad



## Insurance rating

- £6,000 cash rating
- £60,000 valuables



### Version S (key operated)

ECB.S certified (EN 1300 class B) armoured high security 10 lever key lock with 50,000,000 key differs. Resettable lock can be reprogrammed\*.

Art.-No.	Exterior H x W x D mm	Interior H x W x D mm	Door H x W Opening mm	Weight kg	Volume l
MT 24 N S	340 x 430 x 390	250 x 348 x 294	250 x 336	43	25.8
MT 26 N S	530 x 430 x 390	440 x 348 x 294	440 x 336	60	45.3

\* Lock can be reprogrammed to a new set of keys



### Version E (electronic keypad)

Fully programmable VdS tested and ECB.S (EN 1300 class B) electronic combination lock with LCD display and menu driven interface. Up to 10 users can be programmed.

Art.-No.	Exterior H x W x D mm	Interior H x W x D mm	Door H x W Opening mm	Weight kg	Volume l
MT 24 N E	340 x 430 x 390	250 x 348 x 294	250 x 336	43	25.8
MT 26 N E	530 x 430 x 390	440 x 348 x 294	440 x 336	60	45.3

Also available as a wall safe, see page 18



MT 24 N S



MT 26 N S



MT 24 N E



MT 26 N E





# Karat

electronic keypad with fingerscan

## Insurance rating

- £6,000 cash rating
- £60,000 valuables



## Version E FS (electronic keypad with fingerscan)

VdS tested and ECB.S certified (EN 1300 class 2) electronic combination lock with biometric fingerscan module\*.

Art.-No.	Exterior H x W x D	Interior H x W x D	Door H x W	Weight	Volume
	mm	mm	Opening mm	kg	l
MT 24 N E FS	340 x 430 x 390	250 x 348 x 294	250 x 336	43	25.8
MT 26 N E FS	530 x 430 x 390	440 x 348 x 294	440 x 336	60	45.3



MT 24 N E FS



MT 26 N E FS

LCD display with menu driven interface can administer up to 10 users and 20 finger prints.

## Did you know?

Advanced fingerscan technology is highly precise and sensitive, reading prints with different dermal conditions quickly and securely.



\* 2 different fingers must be programmed to open the safe or combination of finger print and 6 digit pin code

# Karat

## adjustable depth wall safes



### Insurance rating

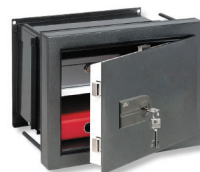
• £6,000 cash rating • £60,000 valuables



#### Version S (key operated)

ECB.S certified (EN 1300 class B) armoured high security 10 lever key lock with 50,000,000 key differs. Resettable lock can be reprogrammed.

Art.-No.	Exterior H x W x D	Interior H x W x D	Weight	Volume
	mm	mm		
WT 14 N S	342 x 434 x 233 (-351)	250 x 352 x 178 (-296)	27.5	15.6 (-26.0)
WT 16 N S	532 x 434 x 233 (-351)	440 x 352 x 178 (-296)	39.0	27.5 (-45.7)



WT 14 N S



WT 16 N S



#### Version E (electronic keypad)

Fully programmable VdS tested and ECB.S (EN 1300 class B) electronic combination lock. Up to 10 user programmable codes.

Art.-No.	Exterior H x W x D	Interior H x W x D	Weight	Volume
	mm	mm		
WT 14 N E	342 x 434 x 233 (-351)	250 x 352 x 178 (-296)	27.5	15.6 (-26.0)
WT 16 N E	532 x 434 x 233 (-351)	440 x 352 x 178 (-296)	39.0	27.5 (-45.7)



WT 14 N E



WT 16 N E



#### Version E FS (electronic keypad with fingerprint)

VdS tested and ECB.S certified (EN 1300 class 2) electronic combination lock with biometric fingerprint module. 20 finger print memory.

Art.-No.	Exterior H x W x D	Interior H x W x D	Weight	Volume
	mm	mm		
WT 14 N E FS	342 x 434 x 233 (-351)	250 x 352 x 178 (-296)	27.5	15.6 (-26.0)
WT 16 N E FS	532 x 434 x 233 (-351)	440 x 352 x 178 (-296)	39.0	27.5 (-45.7)



WT 14 N E FS



WT 16 N E FS



# Diplomat

## Insurance rating

- £10,000 cash rating
- £100,000 valuables

The Diplomat models offer commercial grade security with advanced protection against attack and fire through superior construction. A triple walled armoured body with fireproof insulation and self-sealing door offers exceptional performance.

- Resistance grade 1 and independently tested by ECB.S to EN 1143-1
- AiS approved for £10,000 cash rating
- Emergency locking bolts for additional attack protection
- Superior fire protection certified 60 minutes to LFS 60 P according to EN 15659
- Locking bolts on 4 sides of the door and tripled walled body
- Extensively armoured 4 walled extra slim door for maximum internal space
- Adjustable shelves
- Diplomat electronic models are compatible with TSE door locks and software

## Certification



## Fire certification



[www.burg.biz/uk](http://www.burg.biz/uk)

# Diplomat

key operated



## Insurance rating

- £10,000 cash rating
- £100,000 valuables



## Version S (key operated)

ECB.S certified (EN 1300 class B) armoured high security 10 lever key lock with 50,000,000 key differs. Resettable lock can be reprogrammed\*.

Art.-No.	Exterior H x W x D	Interior H x W x D	Door H x W	Weight	Volume
	mm	mm	Opening mm	kg	l
MTD 34 F60 S	380 x 500 x 462	255 x 370 x 300	255 x 337	112	28.3
MTD 35 F60 S	470 x 500 x 462	345 x 372 x 300	345 x 337	130	38.5
MTD 36 F60 S	625 x 500 x 462	500 x 372 x 300	500 x 337	161	55.8
MTD 38 F60 S	985 x 500 x 462	860 x 372 x 300	860 x 337	233	96.0

\* Lock can be reprogrammed to a new set of keys



MTD 34 F60 S



MTD 35 F60 S



MTD 36 F60 S



MTD 38 F60S

Ideal for all users, key locks offer the simplest method of safe access. Supplied with two keys as standard.



# Diplomat

electronic keypad with fingerscan

## Insurance rating

- £10,000 cash rating
- £100,000 valuables



## Version E (electronic keypad with fingerscan)

VdS tested and ECB.S certified (EN 1300 class 2) electronic combination lock. LCD display with menu driven interface, up to 10 users and 20 finger prints.

Art.-No.	Exterior H x W x D	Interior H x W x D	Door H x W	Weight	Volume
	mm	mm	Opening mm	kg	l
MTD 34 F60 E	380 x 500 x 462	255 x 370 x 300	255 x 337	112	28.3
MTD 35 F60 E	470 x 500 x 462	345 x 372 x 300	345 x 337	130	38.5
MTD 36 F60 E	625 x 500 x 462	500 x 372 x 300	500 x 337	161	55.8
MTD 38 F60 E	985 x 500 x 462	860 x 372 x 300	860 x 337	233	96.0

Fully programmable combination lock with integrated fingerscan module. No key or codes required – a simple swipe of 2 programmed finger prints operates the lock.



MTD 34 F60 E



MTD 35 F60 E



MTD 36 F60 E



MTD 38 F60 E



# Diplomat

## wall safes



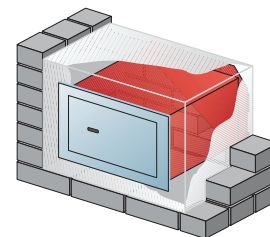
### Insurance rating

- £10,000 cash rating
- £100,000 valuables



### Version E (electronic keypad with fingerscan)

VdS tested and ECB.S certified (EN 1300 class 2) electronic combination lock with biometric fingerscan module.



Art.-No.	Exterior H x W x D	Interior H x W x D	Door H x W	Weight	Volume
	mm	mm	Opening mm		l
WT 10/5 350 E	465 x 500 x 385	345 x 370 x 300	345 x 340	65	37.8
WT 10/6 350 E	620 x 500 x 385	500 x 370 x 300	500 x 340	80	54.8
WT 10/6 580 E	620 x 500 x 580	500 x 370 x 495	500 x 340	90	90.3
WT 10/8 350 E	980 x 500 x 385	860 x 370 x 300	860 x 340	115	94.2
WT 10/8 580 E	980 x 500 x 580	860 x 370 x 495	860 x 340	130	155.4

Fixed depth reinforced back wall - therefore the whole thickness of the wall can be used, no concrete backwall necessary.



WT 10/5 350 E



WT 10/6 350 E



WT 10/6 580 E



WT 10/8 350 E



WT 10/8 580 E



# Royal

## Insurance rating

- £10,000 to £100,000 cash rating
- £100,000 to £1,000,000 valuables

The Royal safe models are ideal for those looking for commercial grade security, featuring the very best of BURG-WÄCHTER engineering. With a wealth of customisable options including paint finishes, locking options and internal fittings, each safe can be made bespoke to the user's requirements. Tested and supervised by ECB.S, industry leading security is at the heart of each Royal safe.

- Resistance grade 1 through to 5 resistance to attack from burglary according to EN 1143-1
- AiS approved for cash ratings from £10,000 to £100,000
- Fire protective material to DIN 4102
- Emergency locking bolts
- Grey / white paint finish as standard
- Choice of locking options, see page 26

E 514 ES



## Certification



[www.burg.biz/uk](http://www.burg.biz/uk)

# Royal

luxury safes



## Insurance rating

• £10,000 to £17,500 cash rating • £100,000 to £175,000 valuables

### Royal E 512 - 518 ECB.S Grade I tested

**Cash rated: £10,000 Valuables: £100,000**

Resettable, armoured high security lock included as standard with 10 levers and 50,000,000 key differs. VdS tested and ECB.S certified to EN1300 class B.



Art.-No.	Exterior H x W x D mm	Interior H x W x D mm	Bolts	Weight kg	Volume l
E 512 S	1000 x 695 x 635	745 x 545 x 400	8 ○	220	162
E 514 S	1315 x 695 x 635	1060 x 545 x 400	12 ○	305	231
E 516 S	1755 x 695 x 635	1500 x 545 x 400	14 ○	350	327
E 518 S	1755 x 1130 x 635	1500 x 980 x 400	18 ○	500	588

○ = round bolt

### Royal E 522 - 528 ECB.S Grade II tested

**Cash rated: £17,500 Valuables: £175,000**

Resettable, armoured high security lock included as standard with 10 levers and 50,000,000 key differs. VdS tested and ECB.S certified to EN1300 class B.



Art.-No.	Exterior H x W x D mm	Interior H x W x D mm	Bolts	Weight kg	Volume l
E 522 S	1000 x 695 x 635	745 x 545 x 400	8 ○	360	162
E 524 S	1315 x 695 x 635	1060 x 545 x 400	12 ○	480	231
E 526 S	1755 x 695 x 635	1500 x 545 x 400	14 ○	640	327
E 528 S	1755 x 1130 x 635	1500 x 980 x 400	18 ○	910	588

○ = round bolt

E 514 ES  
Shown with  
special painting  
& version E & S  
locking options



E 522 E  
Shown with  
version E  
locking option



Royal  
luxury safes

## Insurance rating

• £35,000 to £60,000 cash rating • £350,000 to £600,000 valuables

### Royal E 532 - 538 ECB.S Grade III tested

Cash rated: £35,000 Valuables: £350,000

Resettable, armoured high security twin tumbler lock included as standard with 10 levers and 50,000,000 key differs. VdS tested and ECB.S certified to EN1300 class B.



Art.-No.	Exterior H x W x D mm	Interior H x W x D mm	Bolts	Weight kg	Volume l
E 532 S	1000 x 695 x 635	745 x 545 x 400	8 ○	540	162
E 534 S	1315 x 695 x 635	1060 x 545 x 400	12 ○	690	231
E 536 S	1755 x 695 x 635	1500 x 545 x 400	14 ○	900	327
E 538 S	1755 x 1130 x 635	1500 x 980 x 400	18 ○	1280	588

○ = round bolt

### Royal E 542 - 548 ECB.S Grade IV tested

Cash rated: £60,000 Valuables: £600,000

Two resettable, armoured high security twin tumbler locks included as standard with 10 levers and 50,000,000 key differs. VdS tested and ECB.S certified to EN1300 class B.



Art.-No.	Exterior H x W x D mm	Interior H x W x D mm	Bolts	Weight kg	Volume l
E 542 SS	1000 x 695 x 635	745 x 545 x 400	6 ○ + 1 □	560	162
E 544 SS	1315 x 695 x 635	1060 x 545 x 400	10 ○ + 1 □	720	231
E 546 SS	1755 x 695 x 635	1500 x 545 x 400	12 ○ + 1 □	940	327
E 548 SS	1755 x 1130 x 635	1500 x 980 x 400	14 ○ + 2 □	1340	588

○ = round bolt / □ = square bolt

E 532 E  
Shown with  
special painting  
& version E  
locking option



E 544 ES  
Shown with  
version E and S  
locking options

# Royal

luxury safes



## Insurance rating

• £100,000 cash rating • £1,000,000 valuables

**Royal E 552 - 558** ECB.S Grade V tested

**Cash rated: £100,000 Valuables: £1,000,000**

Two resettable, armoured high security twin tumbler locks included as standard with 10 levers and 50,000,000 key differs. VdS tested and ECB.S certified to EN1300 class B.



Art.-No.	Exterior H x W x D mm	Interior H x W x D mm	Bolts	Weight kg	Volume l
E 552 SS	1040 x 735 x 680	745 x 545 x 400	6	980	162
E 554 SS	1355 x 735 x 680	1060 x 545 x 400	8	1250	231
E 556 SS	1795 x 735 x 680	1500 x 545 x 400	9	1650	327
E 558 SS	1795 x 1170 x 680	1500 x 980 x 400	9	2300	588

= square bolt

## Locking Options

Royal safes can be fitted with multiple locking options to meet customer requirements.



**Version S** High security resettable key lock



**Version SS** Twin high security key locks



**Version C** Resettable combination dial lock



**Version CS** Resettable key and combination dial lock



**Version CC** Two resettable combination dial locks



**Version E** Electronic combination lock with fingerprint



**Version ES** Electronic combination with fingerprint and high-security key lock



**Version EE** Two electronic combination locks with fingerprint



**Version HSS** Two enhanced security twin tumbler key locks with ECB.S class C certification

E 556 ES  
Shown with  
version E and S  
locking options





# Gun Cabinets

## Insurance rating

£1,000 to £10,000 cash rating

£10,000 to £100,000 valuables

Ranger gun cabinets feature safes in a choice of sizes and gun storage capacities for the hobbyist to those with larger arms collections. Ranger certified gun cabinets ensure arms storage meets strict government guidelines.

- Double walled safe doors
- 3mm steel construction: Ranger S1 / A 5 / A 7
- All Ranger safes feature a three sided locking system
- Holder for barrel cleaners in door
- Ranger I/8 features emergency locking system in event of attack
- Prepared for wall and floor fixing with fixings included



## Certification



[www.burg.biz/uk](http://www.burg.biz/uk)



# Ranger

key operated or electronic keypad



## Insurance rating

- £1,000 cash rating
- £10,000 valuables

Ideal for the hobbyist, the Ranger A 5 offers storage capacity for up to 5 firearms with a lockable interior safe. The W 7 A/B model increases capacity to 7 firearms and includes an internal safe certified to VDMA 24992 Level B.



### Version S (key operated)

VdS tested high security lock with ECB.S certification (EN1300 Class A). 9 lever with 1,000,000 key differs.

Art.-No.	for rifles	Exterior H x W x D mm	Interior H x W x D mm	Weight kg
A 5 S	5	1450 x 300 x 335	1444 x 294 x 265	64
W 7 A/B S	7	1450 x 400 x 335	1444 x 394 x 265	76



### Version E (electronic keypad)

VdS tested electronic combination lock with ECB.S certification (EN1300 Class B). 1,000,000 possible key combinations.

Art.-No.	for rifles	Exterior H x W x D mm	Interior H x W x D mm	Weight kg
A 5 E	5	1450 x 300 x 335	1444 x 294 x 265	64
W 7 A/B E	7	1450 x 400 x 335	1444 x 394 x 265	76



A 5

W 7 A/B



# Ranger

key operated or fingerscan

## Insurance rating

- £2,000 cash rating
- £20,000 valuables



RS 1/5



RS 1/7



### Version S (key operated)

VdS tested high security lock with ECB.S certification (EN1300 class A). 9 lever with 1,000,000 key differs.

Art.-No.	for rifles	Exterior H x W x D	Interior H x W x D	Weight
		mm	mm	kg
RS 1/5 S	5	1450 x 300 x 315	1444 x 294 x 265	63
RS 1/7 S	7	1450 x 400 x 315	1444 x 394 x 265	82



### Version E FS (electronic keypad with fingerscan)

Electronic combination lock with ECB.S certification and VdS fingerscan (EN1300 class 2). Programmable up to 10 users.

Art.-No.	for rifles	Exterior H x W x D	Interior H x W x D	Weight
		mm	mm	kg
RS 1/5 E	5	1450 x 300 x 315	1444 x 294 x 265	63
RS 1/7 E	7	1450 x 400 x 315	1444 x 394 x 265	82

## RS 1/7 models

Interior safe is certified to VDMA level B

# Ranger

key operated or electronic keypad



## Insurance rating

- £10,000 cash rating
- £100,000 valuables

The Ranger R I/8 is suited to individuals and clubs with large arms collections, offering storage for up to 8 firearms. Locks are ECB.S approved to EN 1300 class B and the safe offers grade 1 attack resistance according to EN 1143-1 for superior firearm security.



### Version S (key operated)

ECB.S certified (EN 1300 class B) armoured high security  
10 lever key lock with 50,000,000 key differs.  
Resettable lock can be reprogrammed to a new key.

Art.-No.	for rifles	Exterior H x W x D	Interior H x W x D	Weight
		mm	mm	kg
R 1/8 S	8	1486 x 641 x 554	1336 x 498 x 370	265



### Version E (electronic keypad)

Fully programmable VdS tested and ECB.S (EN 1300 class B)  
electronic combination lock with LCD display and menu  
driven interface. Up to 10 users can be programmed.

Art.-No.	for rifles	Exterior H x W x D	Interior H x W x D	Weight
		mm	mm	kg
R 1/8 E	8	1486 x 641 x 554	1336 x 498 x 370	265



R 1/8



# Commercial Safety Cabinets

BURG-WÄCHTER safety cabinets are suitable for commercial environments offering generous storage capacities to accommodate files, documents and valuable office equipment. The OfficeLine models offer a flexible secure storage solution with optional internal fittings to cater to a broad range of commercial applications.



Office 112 S



Office 114 E

## OfficeLine

### Insurance rating

- £2,000 to £17,500 cash rating
- £2,0000 to £175,000 valuables
- Available in four sizes with a choice of locking options and security specification
- Generous internal volume suitable for common file sizes
- Optional interior safes, custom internal fittings and key racking available
- Certified from VDMA security level B through to grade II resistance tested by ECB.S

### Certification



For more information on BURG-WÄCHTER Commercial Safety Cabinet models and interior fittings, please contact the UK office to arrange an individual consultation.

# Commercial Safety Cabinets



OfficeDoku safety cabinets feature a high level of certified fire resistance making them perfect for the storage of important and irreplaceable documents and cash.



OfficeDoku 124 S

## OfficeDoku

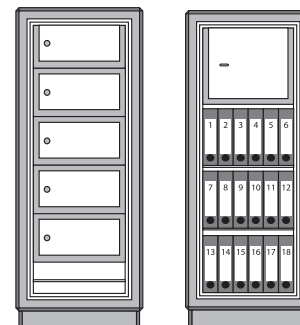
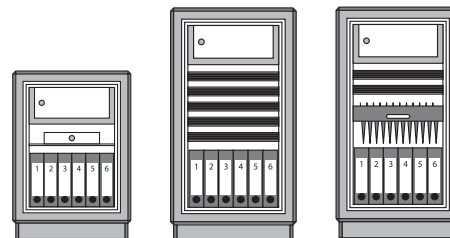
### Insurance rating

- £17,500 cash rating
- £175,000 valuables

All the benefits of the OfficeLine, plus...

- Certified 60 minute fire protection (S 60P to EN 1047-1)
- Available in two sizes
- Two locking options including key and electronic keypad with fingerscan

## Examples of internal space utilisation



### Certification



### Fire Protection





ALWAYS THE SAFE CHOICE

**BURG-WÄCHTER UK Ltd.**

Eurocam Technology Park  
Chase Way, Bradford  
BD5 8HW

**Tel:** 01274 395333

**Email:** UKsales@burg.biz

**BURG-WÄCHTER KG**

Altenhofer Weg 15, 58300 Wetter, Germany

[www.burg.biz/uk](http://www.burg.biz/uk)